



**ALASKA DIVISION OF HOMELAND SECURITY &
EMERGENCY MANAGEMENT**
SITUATION REPORT 24-100 • April 9, 2024



Toll-Free 1.800.478.2337

Anchorage Area 907.428.7000

SEOC 907.428.7100

<p><u>SEOC Preparedness Level</u> Level 1 – Routine Operations.</p>	<p align="center">http://ready.alaska.gov</p>	<p><u>National Terrorism Advisory System:</u> Read the NTAS Bulletin here</p>
<p>Maritime Security (MARSEC) Level:1- Minimum Appropriate Security Measures</p>	<p>WHO Novel Coronavirus Pandemic (COVID-19): 2019 Novel Coronavirus</p>	<p><u>Alaska Military Installation Force Protection Level:</u> FPCON Bravo</p>

(Significant changes from previous situation reports are red.)

Significant Issues:

Wrangel Federal Declaration –

SEOC was notified yesterday that the request to the President for a Federal Declaration was approved for Public Assistance for the area of Prince of Wales-Hyder Census Area, Southeast Island Regional Educational Attendance Area, and the City and Borough of Wrangell.

2024 Emergency Management Conference-

The Emergency Management Conference will be held at the Egan Center (555 W. 5th Ave, Anchorage, AK) from April 9-11, 2024. The LEPC/SERC meetings will be held on April 12, 2024.

State of Alaska Department of Health (DOH)

The DOH stands ready to assist with all aspects of public health and, in the event of a public health emergency, is supported by the SEOC and other state departments as required.

For current information, see: <https://health.alaska.gov/dph/Pages/default.aspx>
<https://health.alaska.gov/dph/Emergency/Pages/prepared/default.aspx>

NTAS Bulletin

The U.S. Department of Homeland Security issued an updated National Terrorism Advisory Bulletin on May 24, 2023. The current and expired bulletins can be viewed at the below link.

<https://www.dhs.gov/national-terrorism-advisory-system>

Travel Alerts and Conditions

For current driving conditions, dial 511 or visit: <https://511.alaska.gov/>

Barry Arm Landslide / Tsunami Risk

For the latest information on the Barry Arm Landslide and Tsunami risk, click here:

<https://dgps.alaska.gov/hazards/barry-arm-landslide.html>

Earthquakes

United States Geological Service (USGS) Earthquake Information: <http://earthquake.usgs.gov/>

National Tsunami Warning Center: <http://tsunami.gov/>

Alaska Volcanoes

Great Sitkin Alert Level: **Watch** and Aviation Color Code: **Orange**

Shishaldin Alert Level: **Advisory** and Aviation Color Code: **Yellow**

Atka Volcanic Complex Alert Level: **Normal** and Aviation Color Code: **Green**

For Alaska Volcano updates, go to: <https://www.avo.alaska.edu/>

Air Quality Index (AQI) Advisories

For the most up-to-date Air Quality Index Advisories:

<http://dec.alaska.gov/Applications/Air/airtoolsweb/Home/Index>

Spills of Oil and Hazardous Substances

The Alaska Division of Environmental Conservation (ADEC) Spill Prevention and Response page is located at:

<https://dec.alaska.gov/spar/>

Alaska Cyber Security Information

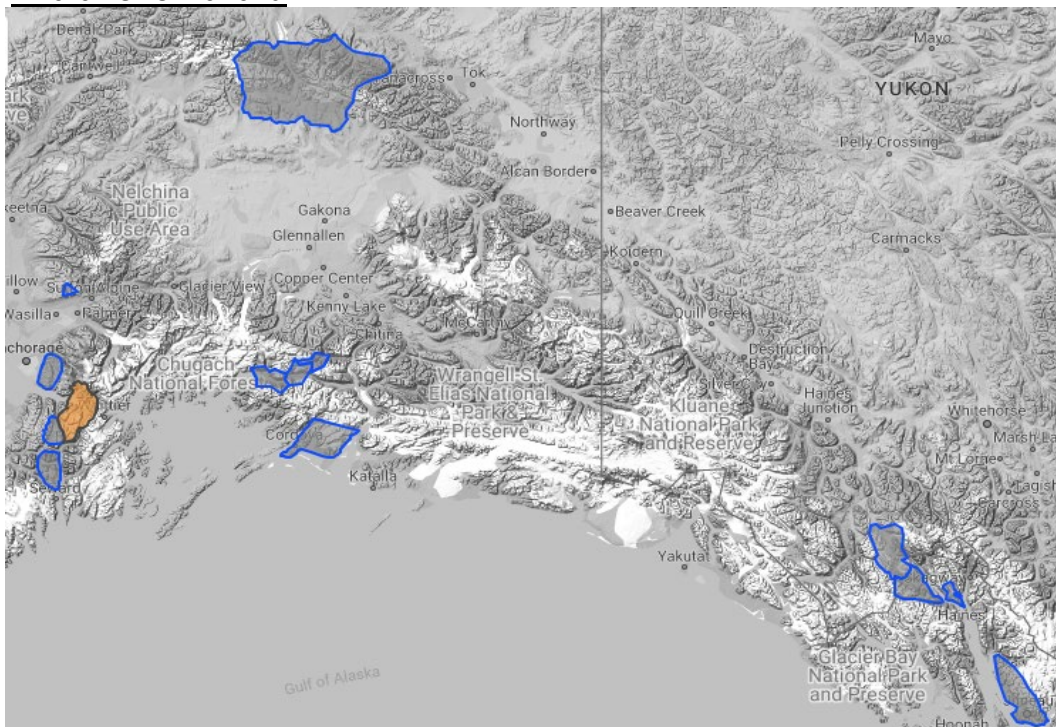
State Employees may sign up for cybersecurity notifications and alerts at

<https://oit.alaska.gov/security>

Cybersecurity and Infrastructure Security Agency (CISA)-Cybersecurity Services and Tools:

www.cisa.gov/free-cybersecurity-services-and-tools

Avalanche Hazard

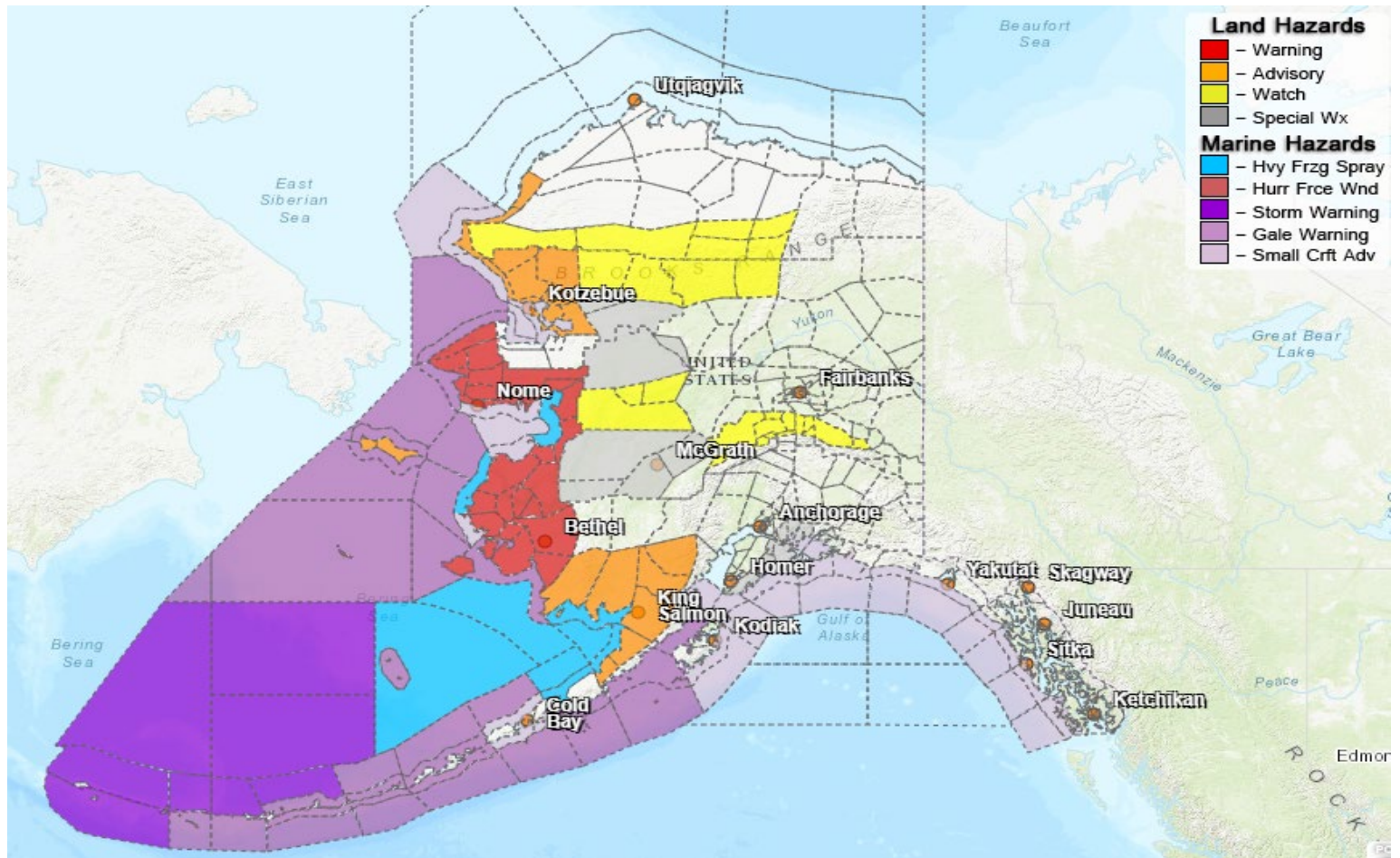


Travel in avalanche terrain is not recommended. Avoid being on or beneath all steep slopes.

Turnagain Pass- Considerable today above 1000', Moderate below treeline

For information and the most current avalanche conditions, go to <https://alaskasnow.org>

Significant Weather:



For more information and the most current weather, Watches / Warnings / Advisories go to: <https://www.weather.gov/arh/>

Special Weather Statement:

- **Upper Kobuk Valleys, Lower Koyukuk Valley, Middle Yukon Valley, Lower Yukon and Innoko Valleys, Upper Kuskokwim Valley, East Turnagain Arm, Western Prince William Sound** -heavy snow showers through Tuesday evening
- **Southern Seward Peninsula Coast, Eastern Norton Sound and Nulato Hills, Yukon Delta Coast**-elevated water levels for Wednesday and Thursday

Blizzard Warning:

- **Shishmaref, Bering Strait Coast, Yukon Delta Coast, Kuskokwim Delta**- 5am Wednesday through the evening

High Wind Watch:

- **Northern Denali Borough, Eastern Alaska Range North of Trims Camp, Howard Pass and the DeLong Mountains, Central Brooks Range**- through Thursday evening.

Winter Storm Warning:

- **Interior and Southern Seward Peninsula, Lower Yukon River** Wednesday through Thursday

Winter Storm Advisory:

- **St Lawrence Island, Noatak Valley, Kivalina and Red Dog Dock, Lower Kobuk Valley, Western Artic Coast-Wednesday through Thursday**

The Next Situation Report will be **April 10, 2024**. A significant change in the situation or the threat level will prompt an interim report. This report is posted on the internet at <https://ready.alaska.gov/sitrep>.

To register for email distribution, go to <http://list.state.ak.us/mailman/listinfo/dhsem.situation.report>. Direct questions regarding this report to the SEOC at 907-428-7100 or seoc@alaska.gov.